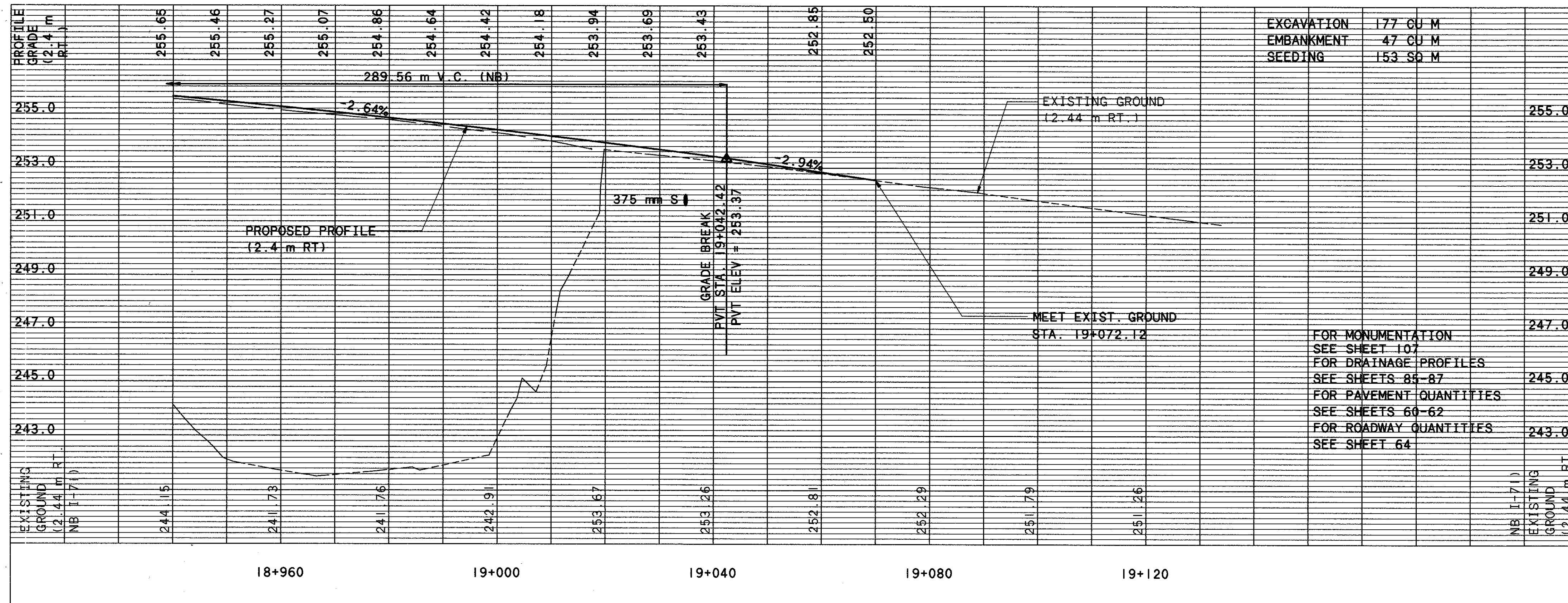
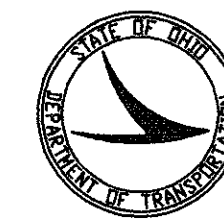


I-71 NORTHBOUND PROFILE



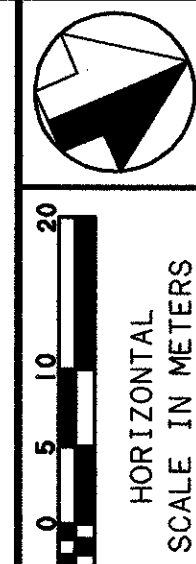
REF NO.	STATION		SPEC	605	605	100 mm FITTINGS		
	FROM	TO				BEND	TEE	WYE
U1	19+027.50	19+050.87	NB			23.37		
U2	19+027.50	19+042.24	NB	3.00		14.74		
U3	19+027.50	19+042.24	NB			14.74		
U4	19+051.07	19+042.24	NB	3.00		17.57		
U5	19+052.60	19+072.12	NB			19.52		
U6	19+052.60	19+072.12	NB	1	6.50	19.52		
U7	19+053.66	19+072.12	NB	1	6.00	18.46		
TOTALS CARRIED TO GENERAL SUMMARY			2	18.50		127.92		

* 707.10 NON-PERFORATED ASTM D3034, SDR 35, SS 931 OR SS 944								
STATION	400 mm 22.5° BEND							
	604	MANHOLE, No. 5	EACH	2				2
	604	INLET, PAVEMENT 3.6 m AS PER PLAN	EACH	1				1
	603	400 mm CONDUIT, TYPE F, 707.05, TYPE C	M	29.3				29.3
	603	375 mm CONDUIT, TYPE B	M	19.1				19.1
	602	CONCRETE MASONRY	CU.M	0.25				0.25
	601	ROCK CHANNEL PROTECTION, TYPE C, WITH FILTER	CU.M	0.96				0.96
	TOTALS CARRIED TO GENERAL SUMMARY							
	DI	19+042.24, 12.81 m RT						
	TOTALS CARRIED TO GENERAL SUMMARY							



metric units

▲ PRESSURE RELIEF JOINT, TYPE A (FOR ADD'L DETAILS, SEE BP-2.3M)



PLAN AND PROFILE STA. 18+940 NB TO STA. 19+130 NB

CUY-71-9.94